

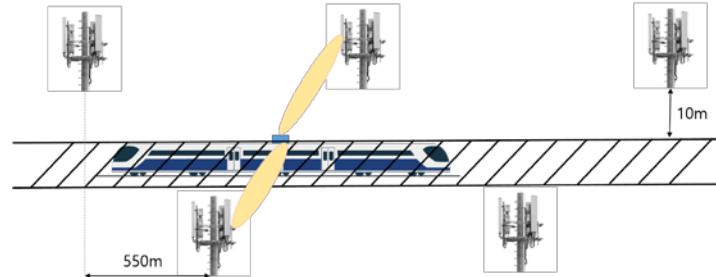
제목: 5G 기반의 초고속 열차 측위 기술

저자: 고경준, 변일무, 최상원, 안우진

소속: 한국철도기술연구원

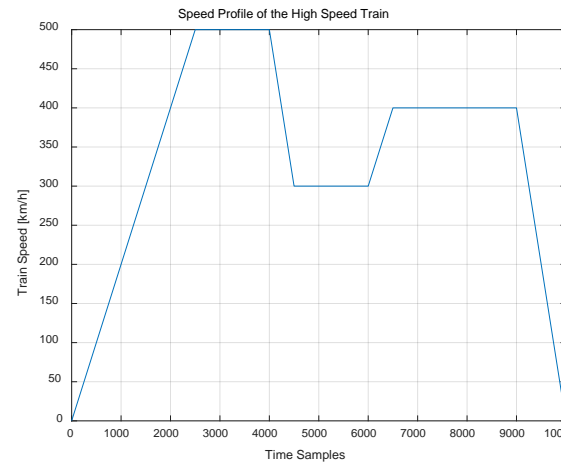
요약: 5G의 CDL-D 채널 모델 이용

TDOA, DOA 두 가지 방법 이용



System Model

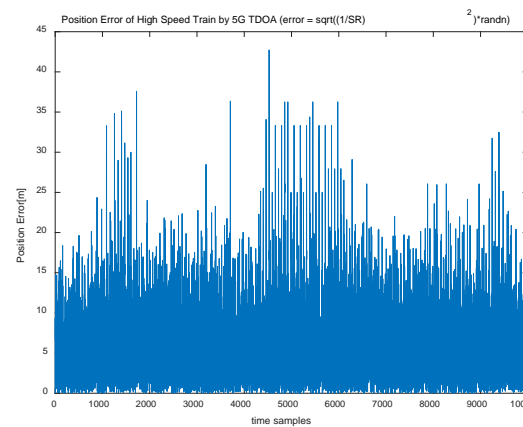
2020



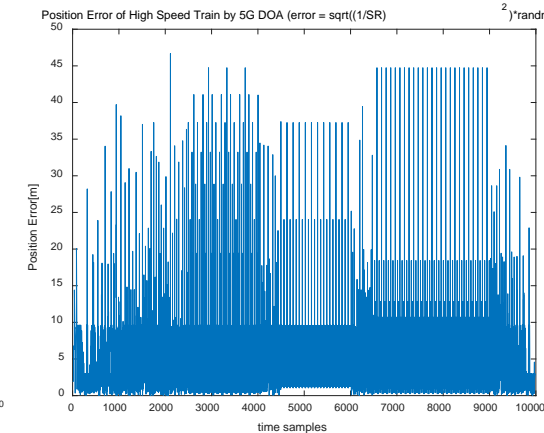
Speed Profile

| | TDOA(m) | DOA(m) |
|----------|---------|---------|
| mean | 6.0357 | 4.8217 |
| worst 5% | 15.1193 | 10.7198 |

실험 결과



TDOA에 의한 측위



DOA에 의한 측위

Acknowledgements: Korea Railroad Research Institute R&D Program